

Tyre Structure

High grip silica compound

Improves snow/wet traction and lowers rolling resistance.

Folded belt edge tape

Endurance of the belt has been enhanced.

Jointless full cover reinforced belt

Ideal tread strength.

Wide steel belt layer

Ensures optimal tread stiffness and improves handling performance.

Equilibrium polyester carcass line

Enhanced sidewall stiffness and durability.



Adoption of high-hardness bead filler

Improves handling and steering response.

Ultra-high strength bead wire

Improves uniformity and durability of the bead position.

Size and Specifications

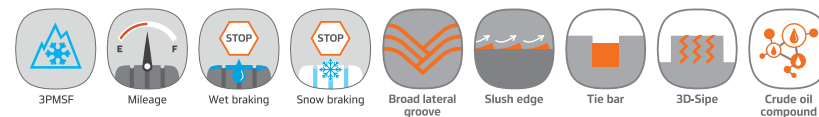
M. Code	Size	Load	Speed	Fuel	Wet	Noise (dB)	Exterior Noise
1025467	215/60R17	96	V	C	B	72	W2
1025468	225/65R17 XL	106	H	C	B	72	W2
1025469	225/60R17	99	H	C	B	72	W2
1025470	235/65R17 XL	108	V	C	B	72	W2
1025471	235/60R18 XL	107	W	C	B	72	W2
1025473	235/55R18 XL	104	V	C	B	72	W2
1025474	235/55R19 XL	105	W	C	B	72	W2
1025472	255/55R18 XL	109	V	C	B	73	W2
1025475	255/50R19 XL	107	W	C	B	73	W2
1025476	275/45R20 XL	110	W	C	B	73	W2



KINERGY4s² x

Just one SUV tyre, whatever the weather



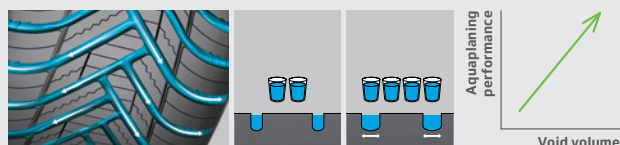


Benefits and Technology

Handling

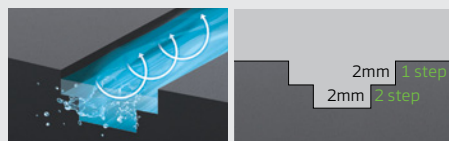
A Wide lateral grooves (water escape accelerator)

Improved drainage with wide and high angled grooves.



B Two-step aqua slant

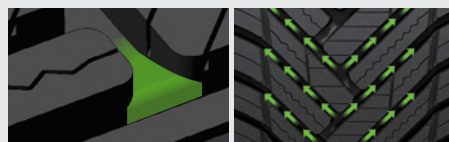
Drains effectively while retaining the stiffness of the block.



Durability

C Concave tie-bar

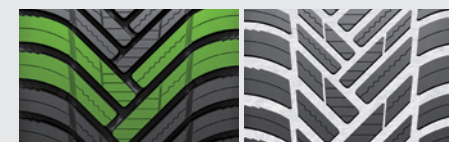
Improves block stiffness by 4% and provides better handling performance.



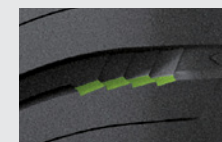
RR / Wet / PBN

D Unique V-shaped tread design

Well-connected grooves and 2-in-1 blocks enhance biting edge and digging force.



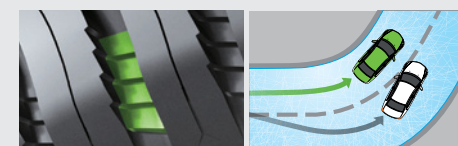
E Serrated edge groove



Serrated edge design at the end of the tread block maximises the edge effects and enhances winter driving performance.

F The slush edge

The edge design, located on the groove enhances cornering performance in the snow.



Conventional
KINERGY 4S² X