

ION Winter
ION Winter **SUV**

Evolutionized to perform more in winter

Specifications

p3



The iON Family

p4



iON Winter
(and SUV)
Vehicle Fitments

p5



Why EVs need EV Specific Tyres

p6



Key Performance

p7



Features and Benefits

p8



Available Sizes

p15



Features and Performance Information

ION Winter *ION Winter SUV*

Technical Profile

Tread width

215-305

Series

30-65

Inch

18-22

Speed symbol

H, V

EU Labeling (RRc/Wet Grip/Noise)

C-D / B / A



Applied Technology & Tire Performance



Evolution compound



Hankook Evolution Technology



Hankook Sound Absorber™



Extended battery range



EV controlling



Low noise



Winter application

The iON Family

The iON Family

iON evo AS
iON evo AS SUV

ALL-SEASON
for America, Asia

iON Winter
iON Winter SUV
WINTER STUDLESS

iON evo
iON evo SUV

SUMMER



iON Winter (and SUV) Vehicle Fitments

				 Compact Car	 Sedan	 Sport Sedan	 Sport & High Performance Car	 Compact & Medium SUV	 Large & Luxury SUV
Winter	 3PMSF	Non Stud	Alpin	 winter <i>i*cept RS³</i>	 Winter <i>i*cept evo³</i>		  <i>ION Winter</i>		 Winter <i>i*cept evo³ X</i>
			Nordic	 Winter <i>i*cept iZ²</i>		 Winter <i>i*cept X</i>		 Winter <i>i*cept X</i>	
Extreme Winter		Stud		 Winter <i>i*Pike RS²</i>				 Winter <i>i*Pike X</i>	

Why EVs Need EV Specific Tyres

For ICE Vehicles



Ultra High Performance Winter Tyre

Optimized for ICE vehicles, these tyres will not perform as well as on ICEs when mounted on electric vehicles.

Tailored Specifically for Electric Vehicles



iON Winter

Tailored specifically for high-end electric vehicles, the iON Winter (and SUV) is the answer to maintaining class.



ELECTRIC VEHICLE TESTED PERFORMANCE RATINGS

Handling	<div></div>	<div></div>	<div></div>	<div></div>	<div></div>	<div></div>	<div></div>	<div></div>	<div></div>
Grip	<div></div>	<div></div>	<div></div>	<div></div>	<div></div>	<div></div>	<div></div>	<div></div>	<div></div>
LRR	<div></div>	<div></div>	<div></div>	<div></div>	<div></div>	<div></div>	<div></div>	<div></div>	<div></div>
Noise	<div></div>	<div></div>	<div></div>	<div></div>	<div></div>	<div></div>	<div></div>	<div></div>	<div></div>
Mileage	<div></div>	<div></div>	<div></div>	<div></div>	<div></div>	<div></div>	<div></div>	<div></div>	<div></div>

* Equipped with all the technology applied in the ABB FIA Formula E World Championship official tire

Double the Advantage

The iON Winter (and SUV) pushes the limits of trade-offs to reach optimum performance.
The iON Winter (and SUV) is specifically tailored for electric vehicles, but also equipped with the best of both worlds.

UNCOMPROMISED PERFORMANCE



Snow Performance

Low Rolling Resistance / Low Noise



Drive in Peace

Noise Proof Technology

Electric motors are almost soundless which eventually causes the driver to hear more noise from tires. With Hankook sound absorber™, The iON Winter (and SUV) offers a quiet and pleasant ride in all speed ranges.



Minimized Tread Pattern Noise

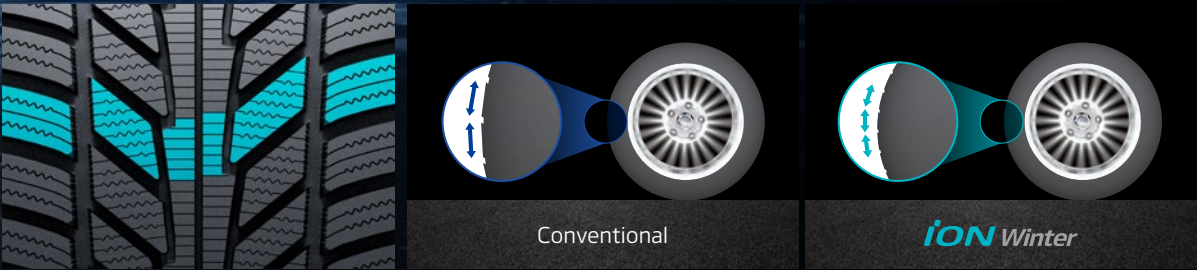
V-Shaped Shifting Pattern



The iON Winter (and SUV)'s V-shaped pattern spreads the road noise by the alternatively shifting inside and outside blocks during road contact which also provides additional snow traction.

Multi-Pitch Optimization

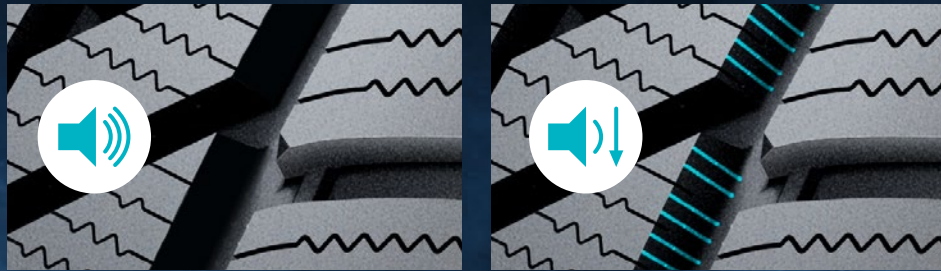
Tire noise can be drastically reduced by optimizing the pitch sequence. The iON Winter (and SUV) has optimized the number and size of pitches to listen more to what matters.



Minimized Cavity Noise

Knurling Technology

The iON Winter (and SUV)'s knurling technology applied inside the grooves effectively reduces resonance noise during road contact by narrowing the air path, without losing the groove's intended features.



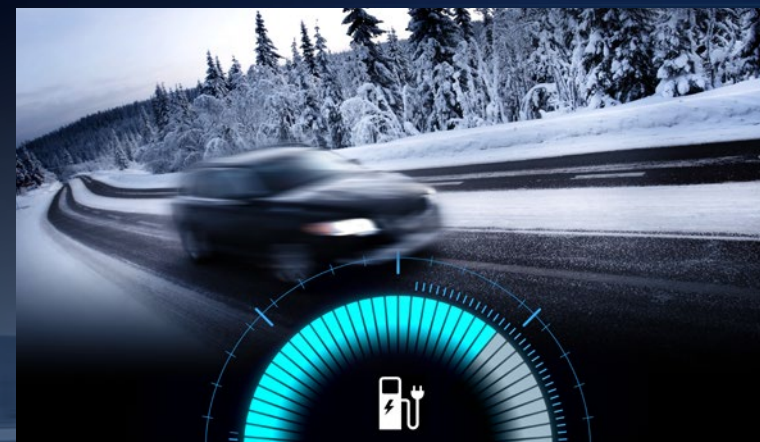
Charge Less, Cruise More

Extended Range

Hankook understands the concerns of losing energy while driving Electric Vehicles in winter. By reducing the rolling resistance, the battery lasts longer to drive a longer distance. A few miles can be crucial during an emergency.



Further Reduced Rolling Resistance



Optimized Curing

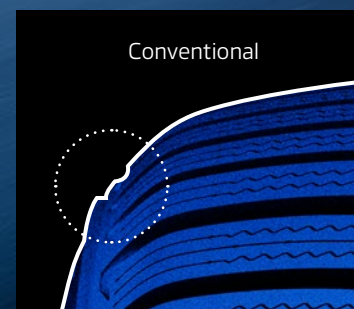
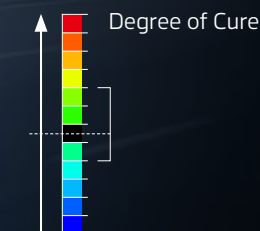
The iON Winter (and SUV) achieved a decent grade in LRR performance by applying an advanced compound and Hankook tire's optimized curing technology which improves all parts of the tire equally.



OVER CURED



OPTIMIZED



Conventional



iON Winter

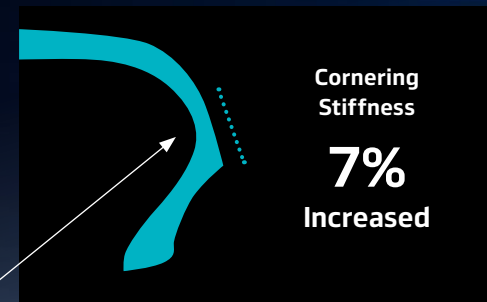
Aerodynamic Profile

The Aerodynamic profile of the iON Winter (and SUV) reduces air / rolling resistance, also noise.

Handle the Winter

Advanced Handling in Winter Conditions

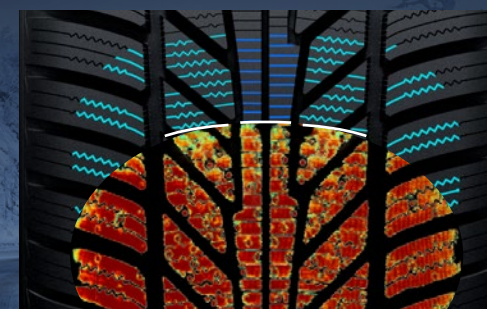
The iON Winter (and SUV) is engineered and designed to bear the high torque power of Electric Vehicles and to provide accurate handling to keep you safe in all road hazards in Winter.



Enhanced Cornering Stability

EV Contour Technology

Tire stiffness is essential to be improved to bear the weight of electric vehicles. Hankook's EV Contour Technology increases cornering stiffness by 7% to advance electric vehicle handling performance.



Improved Snow Traction

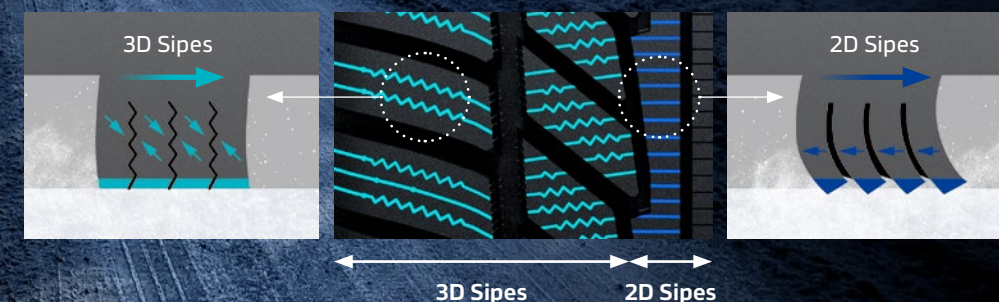
Optimized Sipe Angles

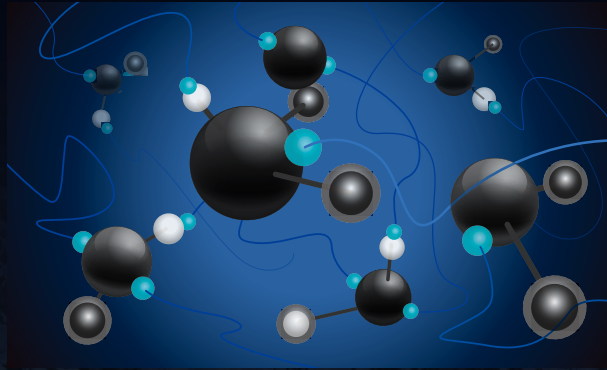
The angles of sipes on the iON Winter (and SUV) are optimized to improve braking and traction on snow. The accuracy of sipe angles can significantly improve safety on snowy roads.

Superior Handling on Winter Roads

Diversified Sipes

The tread pattern rigidity is optimized by applying 2D sipes in the center and 3D sipes in the blocks surrounding. This allows the iON Winter (and SUV) to provide superior handling on all types of winter road surfaces.





Advanced Snow Performance secured, adding Reduced Rolling Resistance

EVolution Compound

Composed with high-concentration silica and eco-friendly materials, the EVolution compound provides satisfactory mileage and further reduced rolling resistance without missing snow performance.



Improved Wet Grip

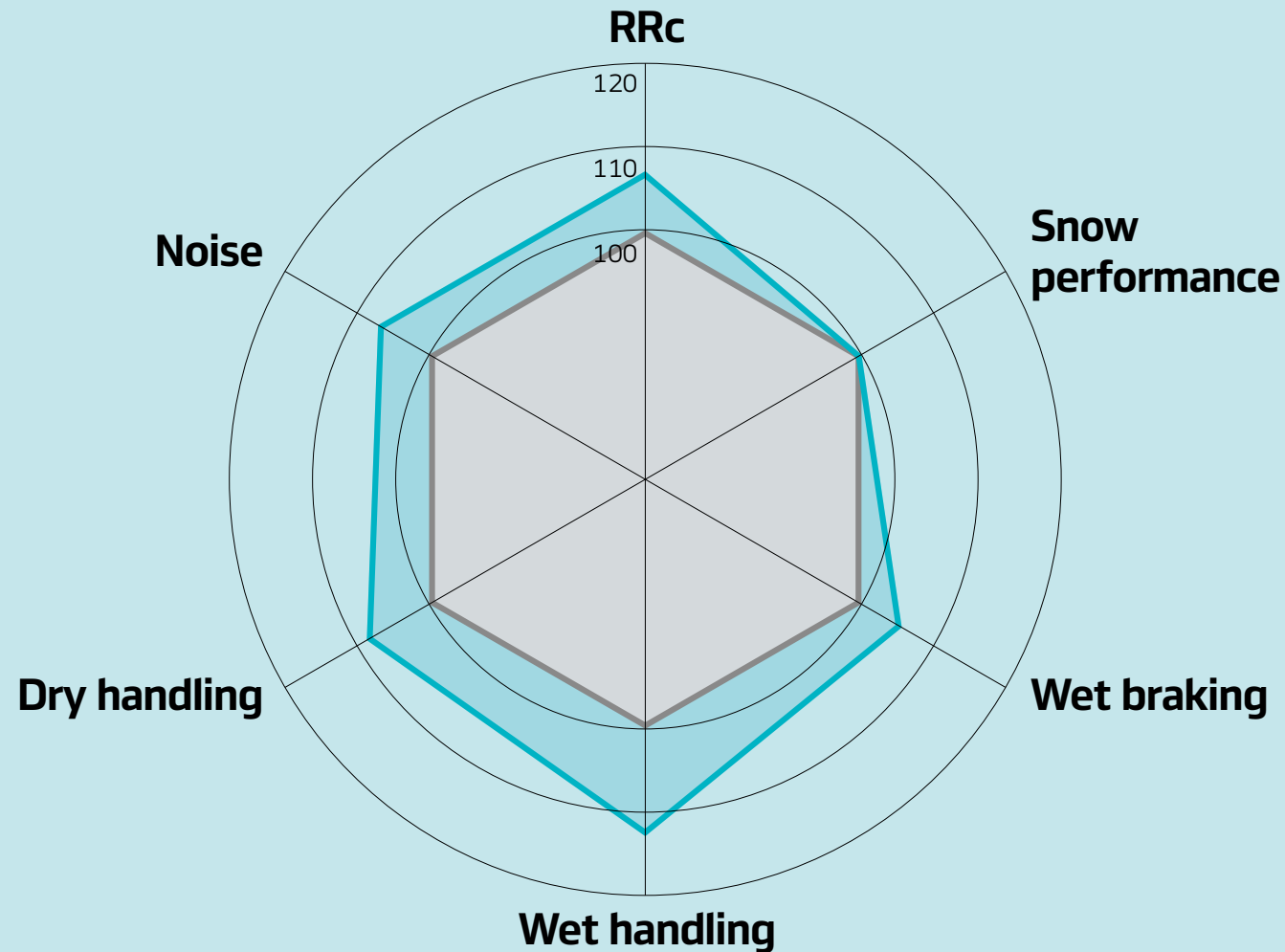
Water Pipe Kerf

Water pipe kerfs are placed inside the shoulder blocks for water drainage from the main groove, which maximizes grip on wet roads.



Performance Results

FOR INTERANL USE ONLY



- **iON Winter**
- **Winter i'cept evo³**

The iON Winter (and SUV) has the same level of snow performance as our ultra-high performance winter tire, the Winter i'cept evo³.

Magazine Test Results of the Winter i'cept evo³



* Test results based on iON Winter versus Winter i'cept evo³. Results on road may vary.
- Tested on Tesla Model 3
- Tested size: 225/45R18V XL

Tire Structure

EVolution Compound

Composed with high-concentration silica and eco-friendly materials, provides **satisfactory mileage and further reduced rolling resistance** without missing snow performance.

Reinforcement Belt

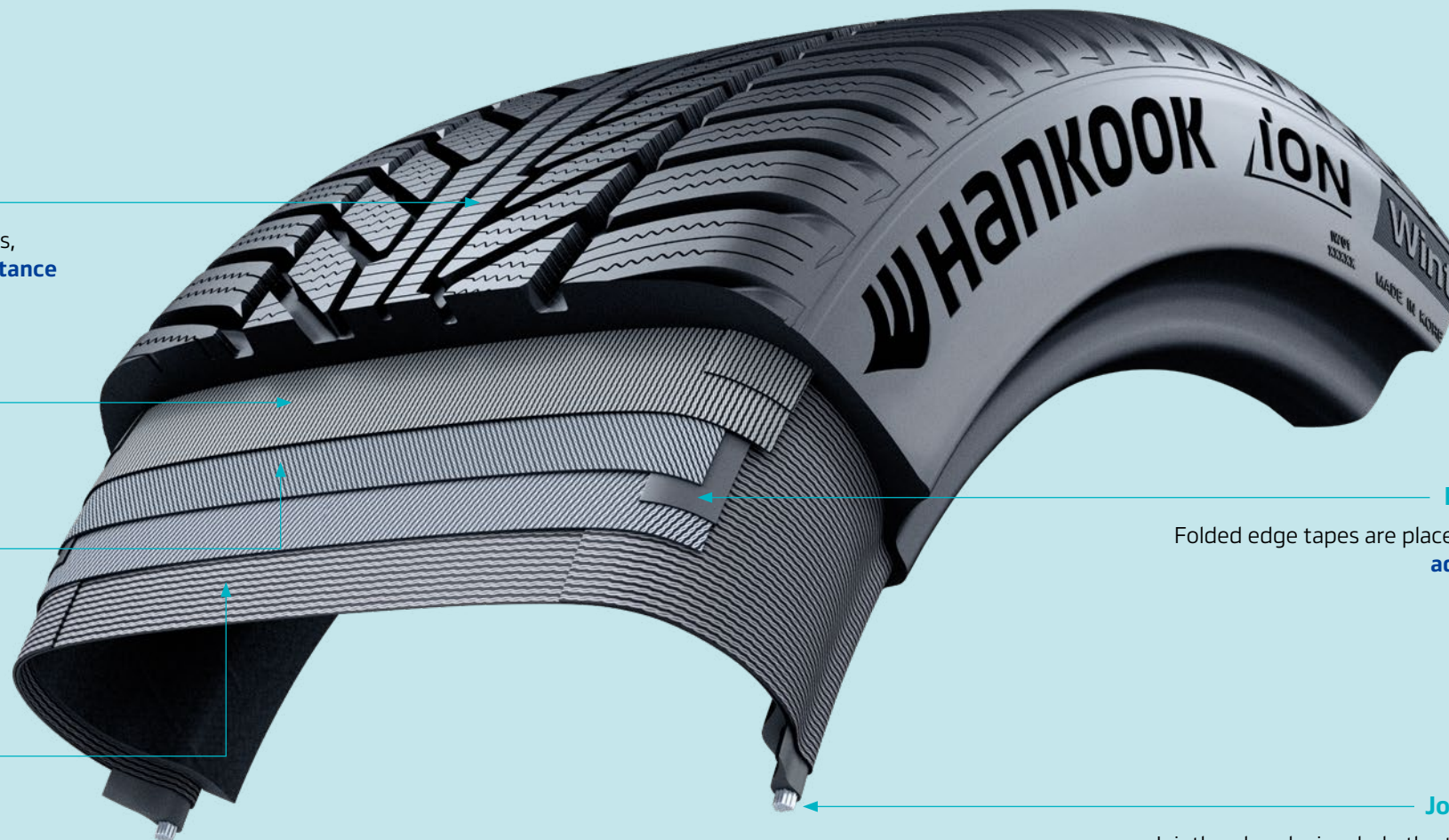
Reinforced belts are applied to **improve endurance** for high levels of initial power and acceleration.

High Strength Steel Belt

High strength steel belts are applied to absorb impact and **to improve durability and comfort.**

Mono Layer Structure of Fiber Stiffener

A mono layer of fiber stiffener with super turn up structure is applied to **reduce rolling resistance and to improve sidewall stability.**



Folded Edge Tape

Folded edge tapes are placed between belts for **additional durability.**

Jointless Bead Wire

Jointless bead wires help the tyre to remain safely attached to the wheel with **increased binding force.**

Available Sizes

ION Winter

Inch	Series	Size	Rolling Resistance	Wet Grip	Noise Class	PBN	Available Vehicle
21	30	305/30R21V XL	C	B	A	72	Taycan
	35	245/35R21V XL	C	B	A	69	Model S
		265/35R21V XL	C	B	A	70	Model S, Taycan
20	35	235/35R20V XL	C	B	A	69	Model 3
	40	285/40R20V XL	C	B	A	72	Taycan
	45	215/45R20H XL	D	B	A	69	ID.3
		245/45R20V XL	C	B	A	69	Taycan
19	40	235/40R19V XL	D	B	A	69	Model 3
	45	245/45R19V	C	B	A	69	Model S, IONIQ6
		275/45R19V XL	D	B	A	70	Taycan
	50	215/50R19H	D	B	A	69	ID.3
	55	225/55R19V XL	C	B	A	69	Taycan, E6
18	45	235/45R18V XL	D	B	A	69	Model 3
	55	215/55R18H	D	B	A	69	ID.3, e2008, MX-30
		225/55R18V	C	B	A	69	IONIQ6(New EV)

ION Winter SUV

Inch	Series	Size	Rolling Resistance	Wet Grip	Noise Class	PBN	Available Vehicle
22	35	285/35R22V XL	C	B	A	72	e-tron, Model X
	35	295/35R22V XL	C	B	A	72	Macan BEV
	40	255/40R22V XL	C	B	A	70	I-PACE
		265/40R22H XL	C	B	A	70	e-tron
21	35	255/35R21V XL	D	B	A	70	Model Y
		275/35R21V XL	C	B	A	70	Model Y, E6
	40	255/40R21V XL	D	B	A	70	ID.4, GV60, EQC
		295/40R21V XL	C	B	A	72	Macan BEV
	45	235/45R21V XL	C	B	A	69	ID.4, EQC
		255/45R21V XL	C	B	A	70	Macan BEV
		265/45R21H XL	C	B	A	70	e-tron Sportback
	40	255/40R20V XL	C	B	A	70	Model Y
20	45	255/45R20V XL	C	B	A	70	e-tron, Model X, ID.4, IONIQ 5, EV 6
		285/45R20H XL	C	B	A	72	e-tron
	50	235/50R20V	C	B	A	69	e-tron, ID.4, EQC
		245/50R20V XL	C	B	A	69	I-PACE
		255/50R20H XL	C	B	A	70	e-tron Sportback
	55	235/55R20V XL	C	B	A	69	Macan BEV
19	45	255/45R19V XL	C	B	A	70	Model Y
	50	255/50R19H XL	C	B	A	70	e-tron, ID.4
	55	235/55R19V XL	C	B	A	69	e-tron, ID.4, IONIQ 5, EV6, GV60
		255/55R19V XL	C	B	A	70	e-tron Sportback, Macan BEV
	60	235/60R19V XL	C	B	A	69	Macan BEV
	18	235/60R18H	C	B	A	69	ID.4
		235/65R18V XL	C	B	A	69	I-PACE



Hankook Tire & Technology Co., Ltd.

286, Pangyo-ro, Bundang-gu, Seongnam-si, Gyeonggi-do 13494, Korea T +82-31-5178-7000

www.hankooktire.com

221014_IW01