



ventus S1evo³ SUV

The performance that enables sustainability for SUV



Contents

Features and performance information

Key performance

Product concept

Marketing

Positioning map

Customer benefits and technology

Tyre structure

Available sizes



Features and performance information

ventus S1evo³ SUV

Test Result



Technical profile

Tread width	215~325
Series	30~55
Inch	18~22
Speed symbol	V-(Y)

Technology & Performance icons



Pitch



Compound



Dry handling



Wet handling



Mileage



Ride



Hydroplaning



Wear resistance



Key performance

Improvement in performance compared to predecessor

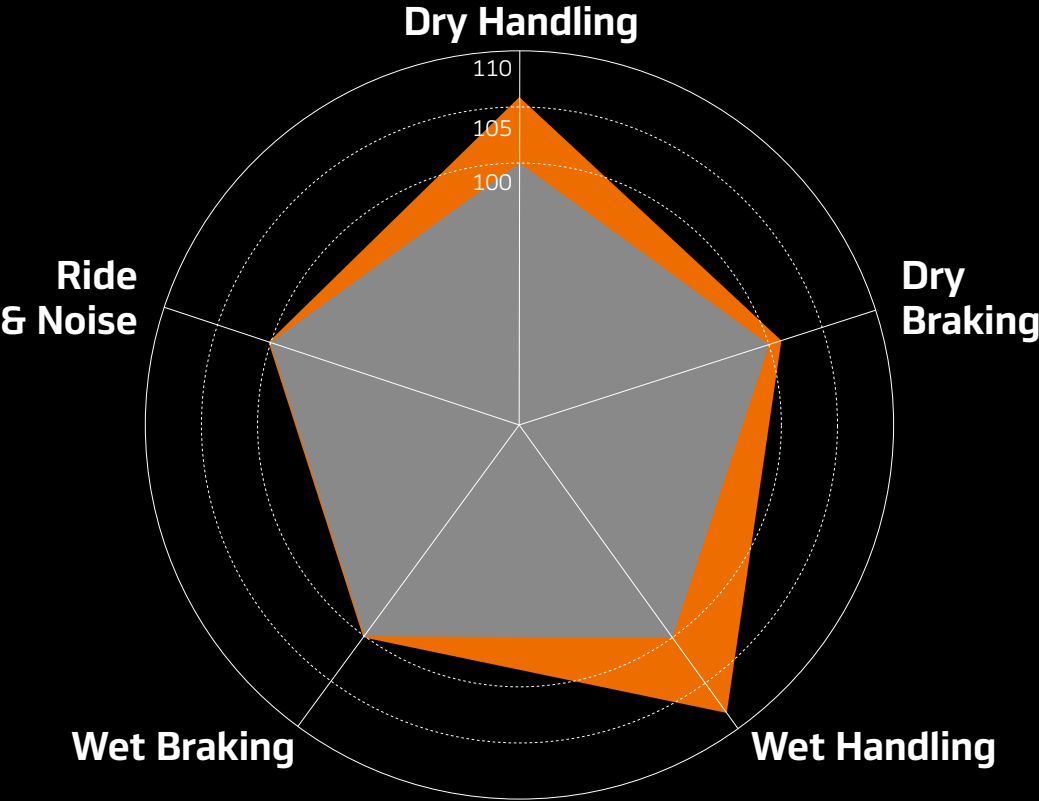
■ **ventus S1evo² SUV**
■ **ventus S1evo³ SUV**

Ride & Noise

High performance tyres must allow for high quality experiences. Superior comfort and low noise levels are two premium features of this tyre, providing an exceptional driving experience for both the driver and passengers.

Wet Braking

Despite of other performance improvements, this tyre allows the excellent wet braking performance same with its predecessor.



Dry Handling

Compared to its predecessor, this tyre demonstrates a far superior handling performance which allows the driver to experience excellent stability.

Dry Handling is improved by 6%.

Dry Braking

Extremely short braking distances on dry surfaces by optimizing balance of the tread block stiffness.

Wet Handling

Even loads transfer vertically and laterally, they maintain a stable foot shape through an optimal profile design and highly enriched synthetic silica compound. Providing the best handling performance.

Wet Handling is improved by 8%

Product concept

The performance that enables sustainability for SUV

For performance that enables sustainability

Performance, safety and comfort are embodied in our sustainable tyres.

- Truly superior handling performance that will transform your driving experience.
- Powerful and responsive braking performance that reduces the braking distance on wet roads or in the event of an emergency.
- Maintains ride comfort, fuel efficiency and even drive performance.



ventus S1evo³ SUV

HANKOOK
driving emotion

Tyres chosen by premium car manufacturers

ventus S1evo

3D wave groove



2005

ventus S1evo² SUV

Triple layered groove



2012



Audi Q3, Q5, Q7
Mercedes-Benz GLC
BMW X3/X4

VW Tiguan
Porsche Macan

ventus S1evo³ SUV

Interlocking groove



2019

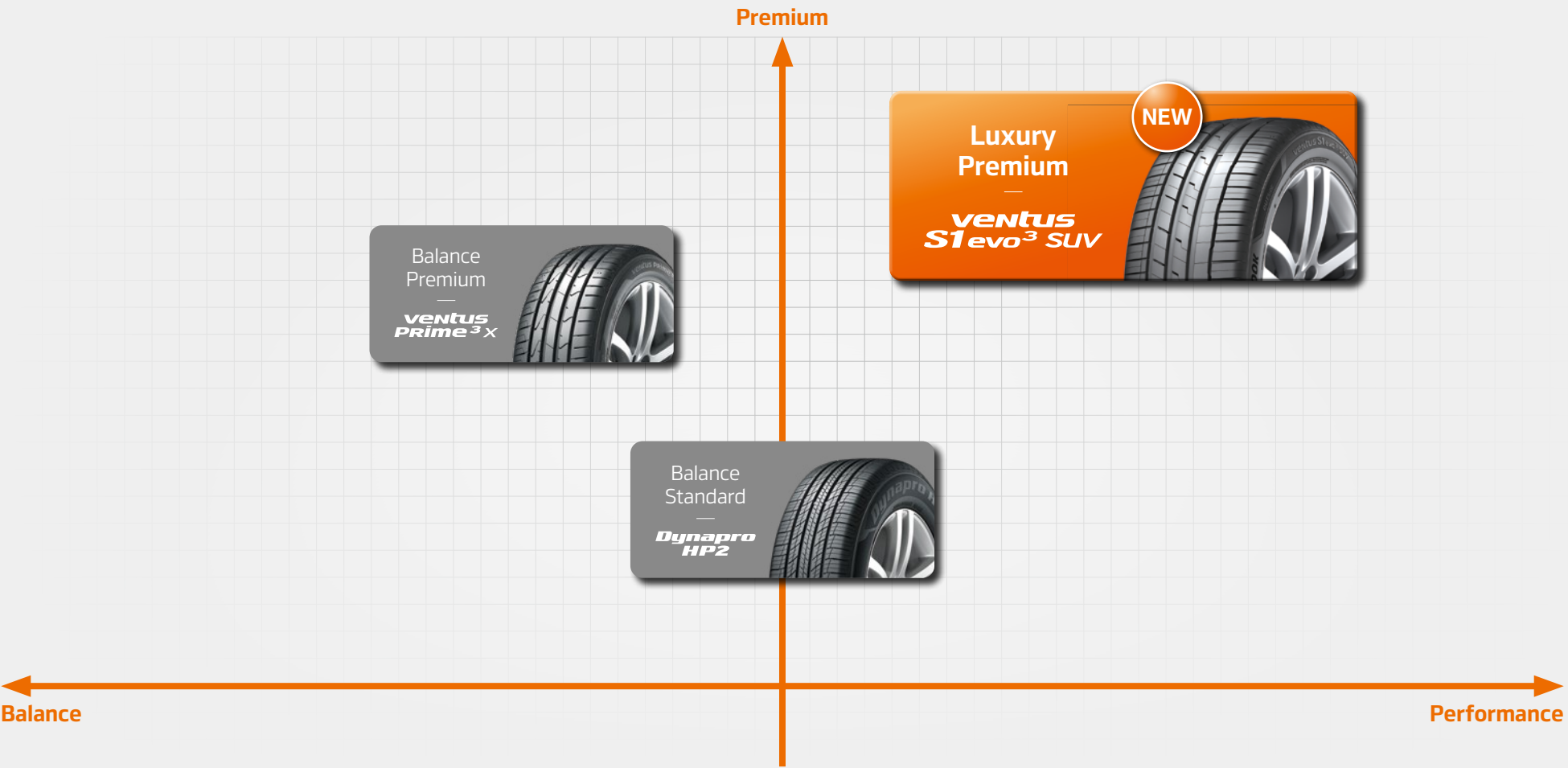
NEW



Audi Q8
BMW X5/X6
Porsche Cayenne

Positioning map

SUV



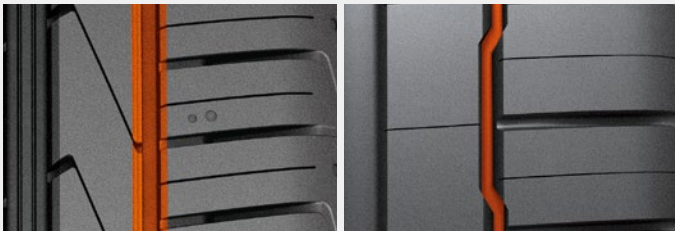
Handling

SPORTY

A Interlocking groove

Ventus S1 evo³ SUV is equipped with interlocking outside grooves to secure wet grip and prevent hydroplaning on slick surfaces. This reinforces its performance on wet roads and cornering in the rain, without compromising dry handling performance.

* Technology Patent: 10-2018-0109541



Straight groove

Interlocking groove

Subjective evaluations performed under actual road conditions

Evaluation category (point)	Straight <i>ventus S1evo² SUV</i>	Interlocking <i>ventus S1evo³ SUV</i>
Dry handling	100	106
Wet handling	100	108

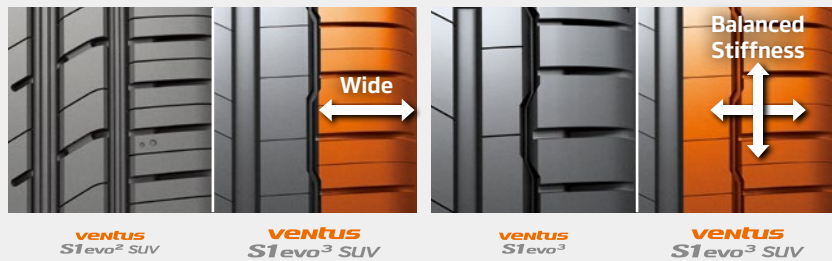


Handling

SPORTY

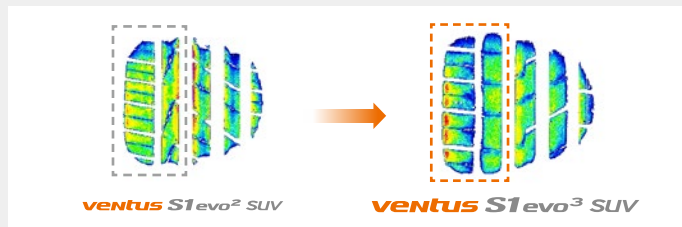
B Balanced stiffness

The outer blocks and shoulders of the tyre, where heavy loads and contact pressure are concentrated due to cornering, are expanded. The maximum steering grip force is secured by the dual action of the reinforcement belt, which secures the flat contact surface under any conditions. Additionally, separated curf on inter blocks can be dispersed high load for SUV as well. This Balanced in&out blocks ensure the dry handling is improved by 6%.



C Profile technology

Compare to the K117A, Outside blocks of K127A provide wider and more stable grip in cornering situations.

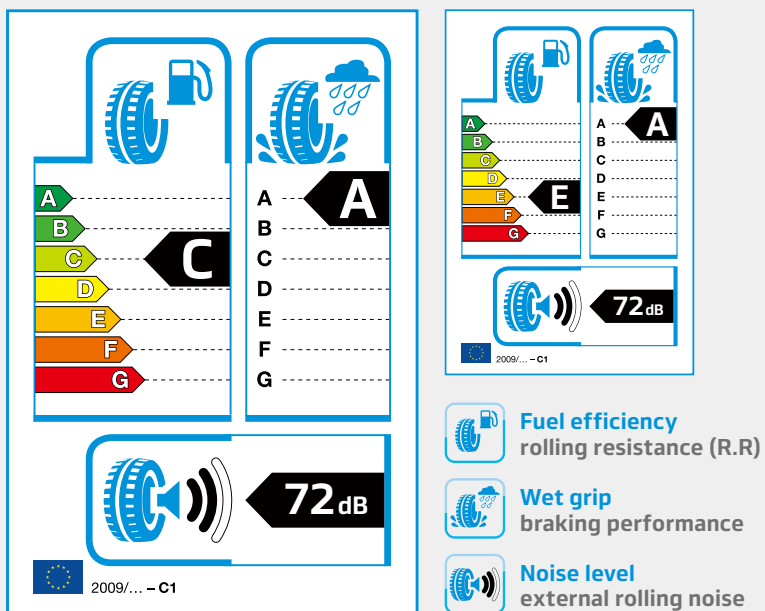


EU labeling

SAFETY

There is nothing more important than safety. All specifications have been awarded with wet grip class A.

EU tyre labelling regulations



* EU label information may vary by size.
Please refer to the attached "available size list" for details.



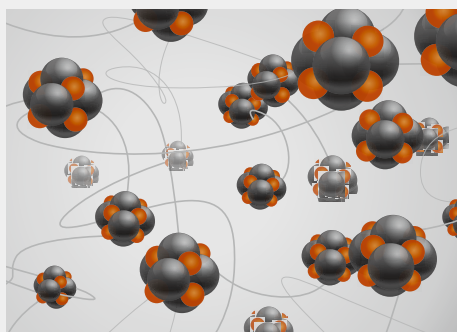
Wet

SAFETY

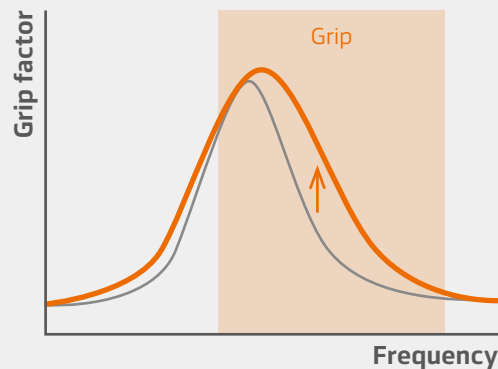
HSSC (Highly Enriched Synthetic Silica Compound) provides the ultra grip on wet surfaces.

E HSSC (Highly Enriched Synthetic Silica Compound)

HSSC (Highly Enriched Synthetic Silica Compound) is a new compound, in which the highly purified and quality silica is vulcanised at low temperatures for twice the duration compared to regular tyres. This enables the increased blending between molecules that secures a solid driving performance and improved mileage.

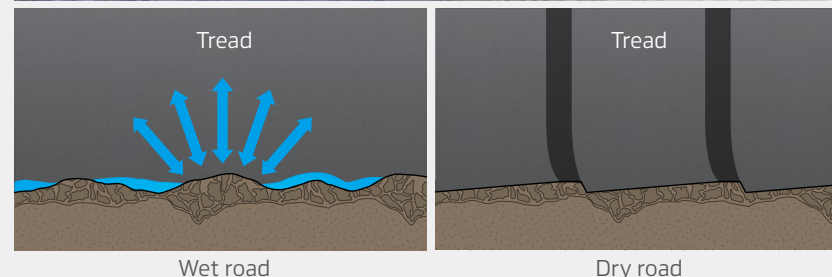


- Filler: Hydrophilic
- Functional group
- Polymer: Hydrophobic



The high concentration of silica and newly added substances maximises the grip force under different surface conditions and ranges.

- Advanced silica
- Conventional



Through the use of advanced silica compounds, performance on all types of wet and dry surfaces has been maximised.

Ride & Noise

We designed the inside and the outside differently to reduce noise.

COMFORTABILITY

F Inside & outside dual pitch

Inside

It presents improved performance in terms of hydroplaning and wet braking, by increasing the number of inner pitches (blocks) to secure the gaps for enhanced drainage.



Wet braking



Hydroplaning

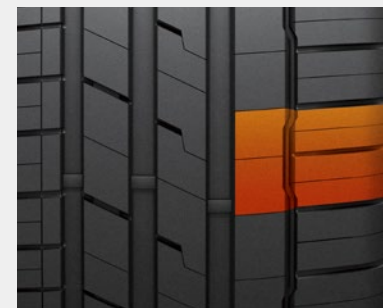
Inside

Outside



Outside

The number of outer pitches is optimised to secure the steering grip performance required for dry cornering, this is designed to contribute to the reduction of pattern noise as well.



Dry handling



Low noise

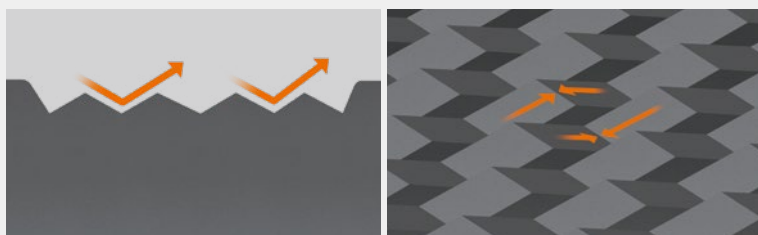
Ride & Noise

COMFORTABILITY

G Sidewall design

Reinforced sidewall block stiffness

The reinforced block stiffness is produced through the connection of lattice structured interlocking units, which surpasses those of conventional and independently aligned serration patterns.



Improved thermal circulation, air permeability and ride comfort

Adding to the effectiveness of thermal circulation and air permeability through the use of repetitively structured units, is that more than double the conventional serration patterns are securing spaces and height changes. This delivers improved ride comfort with an exceptional vertical bend and stretching capability, made possible by the structural forms which are conducive to the vertical buffering action of the tyre.



Polishing technology

APPEARANCE

KINDLY USE THIS PAGE INTERNALLY.

H Polishing technology

Comparison of tire gloss / sheen & surface texture



General tire



Glossiness: About 700%
Surface roughness: About 140%

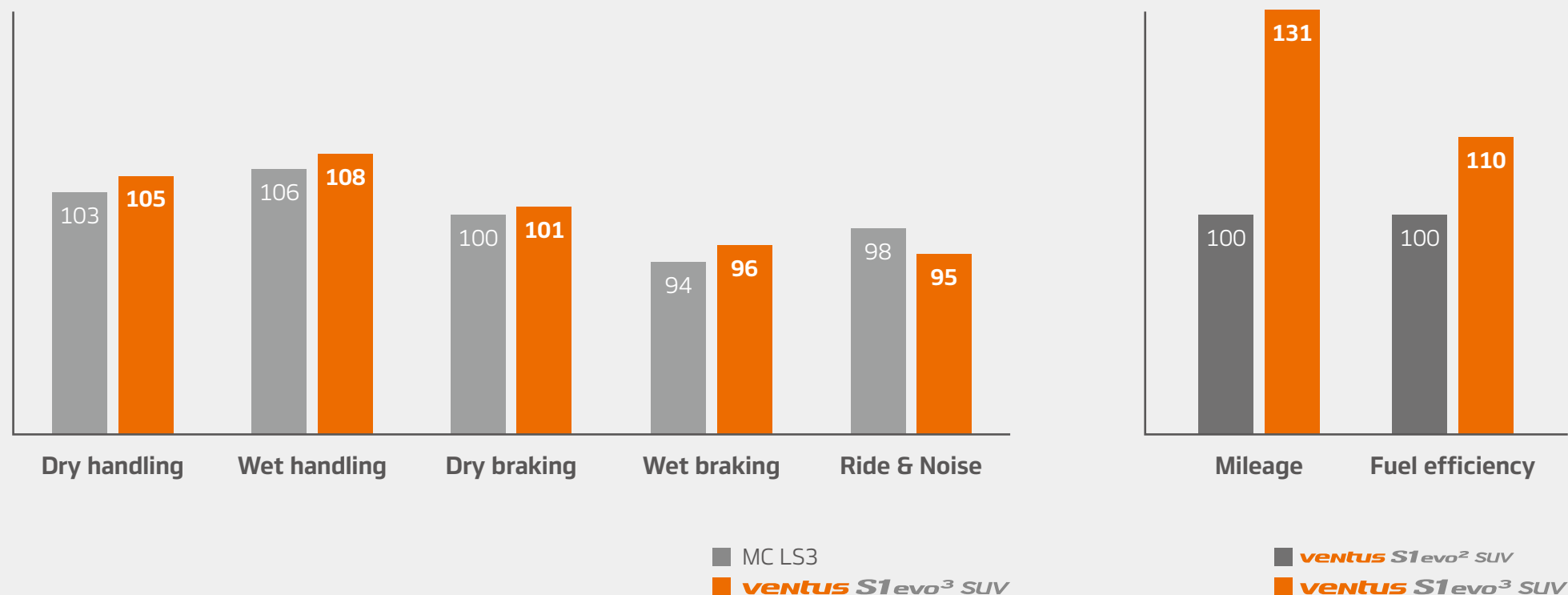
Polishing tire

* Pictures taken in the same environment

Polishing technology is not brand new since it's widely applied in the market. But, K127A is the first applied product in Hankook. The customers might concern to compare with another not applied our products.

Performance results

KINDLY USE THIS PAGE INTERNALLY.



Tread Compound

HSSC (Highly Enriched Synthetic Silica Compound) is a compound of new technology, in which the highly purified and quality silica compound is vulcanised at low temperatures for twice the duration compared to regular tyres. This allows for the increased blending between molecules that, in turn, secure a solid driving performance and improved mileage.

High Strength Reinforcement Belt

Tyre strength has been increased to respond to high levels of initial output and initial acceleration.

Application of High Strength Steel Belt Wire

Using high strength belts that perfectly absorb external shock, durability of the tyre and riding comfort have been improved.

Dual Layer Fiber Stiffener

With the dual structure of the carcass fiber stiffener, the tyre hardness is structurally assured.



Folded Belt Edge Tape

Endurance of the belt has been enhanced.

Strong Jointless Bead Wire

By increasing the binding force between the wheel and the joint, even with high initial acceleration, the tyre will always be attached to the wheel.

Available sizes

※ Updated: Oct. 2019
 ※ You can view the available sizes of tires in real time in Hankook Product Guide. (URL: product.hankooktech.com)

Inch	Series	Size	SS/LI
18	50	215/50ZR18W	92W
	55	235/55ZR18W XL	104W
		255/55R18W XL	109W
		255/55ZR18Y XL	109Y
19	45	275/45ZR19Y XL	108Y
		285/45ZR19Y XL	111Y
	50	235/50ZR19W XL	103W
		255/50ZR19W XL	107W
		265/50ZR19W XL	110W
		235/55R19V	101V
	55	235/55ZR19W XL	105W
		255/55ZR19W XL	111W
		265/55R19Y XL	113Y
20	35	315/35ZR20Y XL	110Y
		325/35ZR20Y	108Y
	40	225/40ZR20Y XL	94Y
		275/40ZR20Y XL	106Y
		285/40ZR20Y XL	108Y
		295/40ZR20Y XL	110Y
	45	245/45ZR20Y XL	103Y
		255/45ZR20Y XL	105Y
		265/45ZR20Y XL	108Y
		275/45ZR20Y XL	110Y
		285/45ZR20Y XL	112Y
	50	255/50ZR20W XL	109W
		265/50ZR20W XL	111W

Inch	Series	Size	SS/LI
20	50	275/50R20Y XL	113Y
	55	285/50ZR20W XL	116W
		235/55ZR20W XL	105W
		255/55ZR20W XL	110W
21	30	325/30ZR21Y XL	108Y
	35	295/35ZR21Y XL	107Y
		315/35ZR21(Y) XL	(111Y)
	40	255/40ZR21Y XL	102Y
		265/40ZR21Y XL	105Y
		275/40ZR21Y XL	107Y
		285/40ZR21(Y) XL	(109Y)
		295/40ZR21Y XL	111Y
	45	275/45ZR21Y XL	110Y
		285/45R21Y XL	113Y
22	30	295/30ZR22Y XL	103Y
	35	265/35ZR22Y XL	102Y
		285/35ZR22Y XL	106Y
		295/35ZR22Y XL	108Y
		325/35ZR22Y XL	114Y
	40	265/40ZR22Y XL	106Y
		275/40ZR22Y XL	107Y
		285/40R22Y XL	110Y
		295/40ZR22(Y) XL	(112Y)
	45	285/45ZR22Y XL	114Y
23	35	285/35R23Y XL	107Y
		295/35ZR23(Y) XL	(108Y)



Hankook Tire Europe GmbH

Siemensstrasse 14, 63263 Neu-Isenburg, Germany T +49 (0)6102 8149 0 F +49 (0)6102 8149 100

www.hankooktire.com